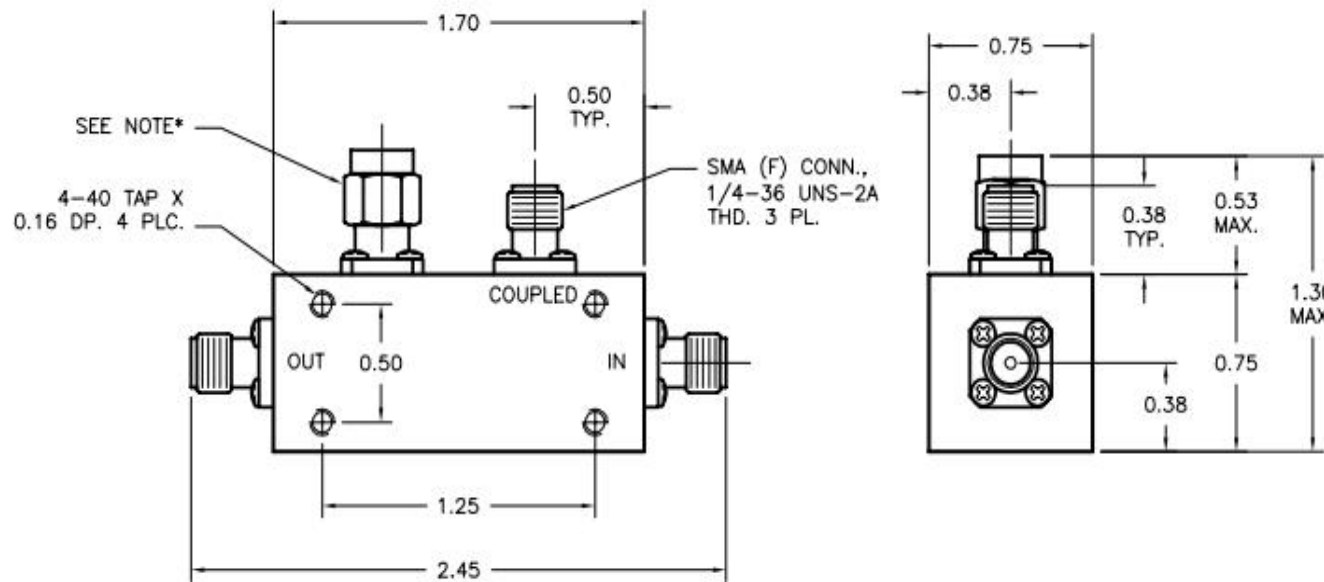


DCHP-4G18G-35-S is a $35\pm 1.5\text{dB}$ coupling high power directional coupler, designed to operate over the 4-18GHz frequency range, with compact size. This model is designed to handle 200W max input power, and also performs with low insertion loss of 0.5dB max and with coupling flatness of $\pm 1.5\text{dB}$ max, and low VSWR of 1.4 max.

Mechanical Outline(Inch):




Specifications:

Coupling:	35±1.5dB
Frequency:	4-18GHz
Insertion Loss:	0.5dB max
Coupling flatness:	±1.5dB max
Directivity:	12dB min
Power Handling:	200W max
VSWR:	1.4:1 max
Connectors:	SMA Female N optional (SMA for coupling port)

Environmental Ratings:

Temperature:	-25°C to +71 °C Operating -65 °C to +100 °C Non-Operating
Vibration:	MIL-STD-202F, Method 204D Cond. B
Altitude:	MIL-STD-202F, Method 105C Cond. B
Temperature Cycle:	MIL-STD-202F, Method 107D Cond. A

High Power Directional Coupler DCHP-4G18G-35-S			
DRAWN:	DWG NO.:	REV CODE: Rev.1.0	 www.connphy.com sales@connphy.com
CHECKRD:	DATE: 18/04/15	SHEET : 1 OF 1	
ISSUED:	SIZE: A	SCALE : N / A	Notes: SPEC ARE SUBJECT TO CHANGE WITHOUT NOTICE.